



**Shred. Feed. Compact**

Ask An Expert, Call (614) 836-2366

# EMSC Auger Pak *Electromechanical* Self-Contained Auger Compactor

**Totally Eliminates Hydraulics**

*Even "PALLETS" can be processed in the Auger Pak*



*Energy efficient auger screw is 5 times faster than ram compactors!*



- Auger Pak Features:**
- All Electric (No Hydraulics)
  - 56,050 lbs Compaction Force
  - Quick Disconnect Plug
  - Sealed Processing Chamber
  - Liquid Direct Flow to Container
  - "P" Sealed Rear Door
  - Bubble Door Adds Capacity
  - Double End Pick-Up Standard
- Eliminates:**
- Hydraulics
  - Oily Messes
  - Leaky Hose Connections
  - Smelly Unsanitary Ram
  - Compartment Build Up
  - Health Department Violations

Model: EMSC1035  
Shown with Enclosed In-Feed Hopper with Doors



**Quality Made in the USA**



**Call Today!**  
**BUY • RENT • LEASE**

**Komar Industries**  
Phone 614.836.2366  
FAX 614.836.9870  
4425 Marketing Place  
Groveport, OH 43125  
web: [www.komarindustries.com](http://www.komarindustries.com)  
E-mail: [info@komarindustries.com](mailto:info@komarindustries.com)

Since 1977



# EMSC Auger Pak

## Electromechanical

### Self-Contained Auger Compactor

Continuous Forward Auger Eliminates Odors & Unsanitary Conditions

**The Komar Auger Pak,** an environmentally friendly all electromechanical self-contained compactor, will fit your "green" needs by saving energy and reducing operating costs. The powerful solid steel auger screw provides over 56,050 lbs. of force, dispatching bag waste, corrugated boxes, wood and standard pallets. Unlike the reciprocating motion of ram compactors, the auger compactor's continuous forward motion eliminates material dragback and reduces processing time. Its sealed processing chamber provides a clean, no mess path for wet or dry waste to the container and keeps smelly, unhealthy liquids from leaking onto the ground. The Auger Pak features a 2 cubic yard processing chamber with a large 51" x 60" opening for easy loading.

Fire Ports provided on each unit.



Bubble Container Door for more capacity and increased compaction ratios.



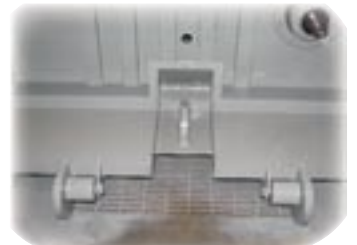
The "P" shaped door seal insures complete liquid retention.



Sealed all electromechanical drive and processing area, eliminates common problems found in conventional hydraulic ram self-contained compactors.



Sealed processing chamber provides a clean, no mess path for wet or dry waste to the container. Featuring a 2 cubic yard processing chamber with a large 51" x 60" opening for easy loading.



Standard double end pick-up



The Auger Pak can be equipped with open or enclosed hoppers.



4" Processing Chamber Drain to Receiving Container

Large 8 lb. auto lube system with a 48 hour low grease indicator is all that is required to maintain the all electromechanical drive.



# It Takes More Than GreenPaint...

Going, Going, Gone **GREEN**

Komar customers know it takes more than green paint to make a compactor environmentally friendly. They are looking for equipment that can make a real difference to our environment, energy usage, safety and still make good economic sense for their operations. Komar's energy efficient electromechanical auger compactors have always been green and provide significant advantages over traditional hydraulically driven ram compactors.

The electromechanical auger compactor **eliminates environmentally hazardous hydraulic oil spills** inherent in traditional ram compactors. Eliminating dangerous oil spills creates a much safer work environment.

The continuous forward motion of the auger compactor screw requires **200% fewer kilowatt hours per cubic yard** of throughput compared to the in-out motion of a ram compactor which **spends half it's operating life going in the wrong direction!**

Depending on the material, auger compactors typically out pack ram compactors by as much as 400%. Generating bigger container loads can eliminate unnecessary transportation which **saves fuel and reduces the carbon footprint.**

Material dragback is a condition found in ram compactors where waste material is dragged back into the charge area under the ram. This situation creates an unsanitary, smelly mess. Company personnel must go into the compactor to clean out the debris. This labor intensive task is not only expensive, but can be very dangerous and unhealthy. By design the continuous forward motion of the auger compactor screw **eliminates material dragback.**

All Komar electromechanical compactors are ANSI, OSHA, and UL compliant and are a viable component of any **ISO-14001** environmental management program.



The hydraulic power unit takes up space, creates oily messes, generates unnecessary noise, requires oil filters and replacement of broken and leaky hoses.



One easy, clean UL approved plug-in disconnect is all it takes to connect power to the all electric drive of the Komar EMSC Auger Pak .

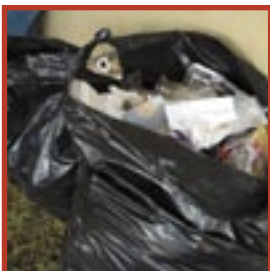


Shown conventional cross cylinder self-contained compactor, with typical contaminated ram compartment.



Komar's open processing chamber eliminates unsanitary & hazardous contamination due to ram drag back. This condition is esthetically displeasing, creates horrific odors, and creates an unhealthy, unsafe situation when cleaning out the machine.

## Materials Processed



Bagged Waste



Medical Waste



Cardboard



Wet Waste



Pallets

Since 1977

Shred. Feed. Compact

Ask An Expert, Call (614) 836-2366



# EMSC Auger Pak Electromechanical Self-Contained Auger Compactor

Continuous Forward Auger Screw Eliminates Material Dragback

## the Green Self-Contained Compactor

- 200% more energy efficient than hydraulic compactors
- No Hydraulics
- Eliminates rodents & insects
- Reduces the Carbon Footprint
- Leakproof

### Utilized By:

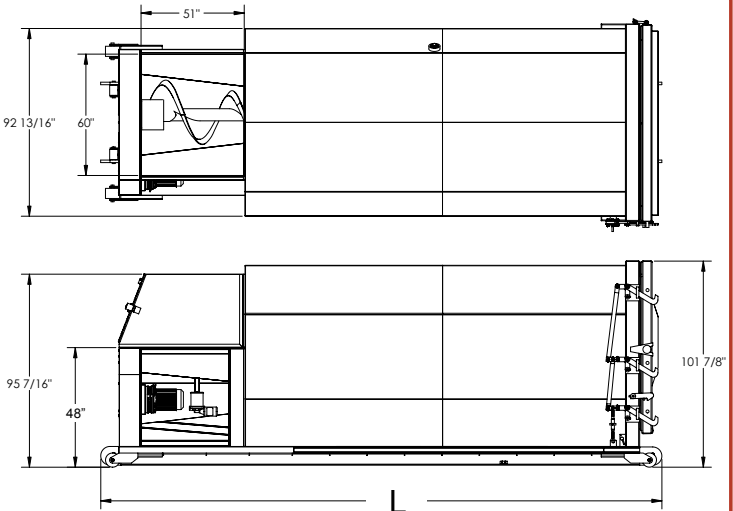
- Supermarkets
- Hospitals & Institutions
- Food Processors
- Bakeries
- Large Restaurants
- Large Office Buildings
- Schools
- Shopping Centers
- Prisons
- Grocery Stores
- Colleges
- Multi-Family Dwellings
- Casinos
- Industry
- Convention Centers

### Receiver Specifications

- 7 Ga. (3/16") Roof & Sides
- 1/4" Floor
- 3" Channel Cross Members on 20" centers, each member gusseted
- 1 1/4" Steel Bull Noses & Solid Nose Rollers
- 6"x 2"x 1/4" Sills
- 8" dia. Front & Rear Rollers
- Floor Ramp 12" H x 36" L @ Rear Door
- Floor 64" W
- Sealed Bubble Rear Door
- Double Articulating Hinge
- Double End Pick-Up
- Fire Hose Connection

### Electrical Features:

- UL Type 4 Electrical Enclosure
- 110 VAC Control Transformer
- Allen Bradley PLC
- ITC:
  - Key Lock Switch
  - "Power On" Light
  - "E" Stop Button
  - "Auto" Light Push Button
  - "Reset" Button
  - "Manual Reverse" Button
  - "Add Grease" Light
  - "Container Full" Light
- Digital Current Display
- Hour Meter



Ground Roller Dimensions:  
61 7/8" (1569mm) Inside Rollers  
67 3/8" (1712mm) Roller Centers  
72 7/8" (1851mm) Outside Rollers

Models	Container Capacity	Charge Opening	Charge Capacity	Overall Length L	Auger Force	Motor	Weight Approx.
EMSC1015	15 cu.yds 11.47 m <sup>3</sup>	51" x 60" 1295.4 mm x 1524 mm	2 cu. yds. 1.53 m <sup>3</sup>	15' 6" 4597.4 mm	56,050 lbs. 249.32 kN	10 HP 7.5 kW	8,950 lbs 4,059 kg
EMSC1020	20 cu.yds 15.29 m <sup>3</sup>	51" x 60" 1295.4 mm x 1524 mm	2 cu. yds. 1.53 m <sup>3</sup>	17' 6" 5207 mm	56,050 lbs. 249.32 kN	10 HP 7.5 kW	9,850 lbs 4,467 kg
EMSC1025	25 cu.yds 19.11 m <sup>3</sup>	51" x 60" 1295.4 mm x 1524 mm	2 cu. yds. 1.53 m <sup>3</sup>	19' 6" 5816.6 mm	56,050 lbs. 249.32 kN	10 HP 7.5 kW	10,650 lbs 4,830 kg
EMSC1030	30 cu.yds 22.94 m <sup>3</sup>	51" x 60" 1295.4 mm x 1524 mm	2 cu. yds. 1.53 m <sup>3</sup>	21' 6" 6426.2 mm	56,050 lbs. 249.32 kN	10 HP 7.5 kW	11,450 lbs 5,193 kg
EMSC1035	35 cu.yds 26.76 m <sup>3</sup>	51" x 60" 1295.4 mm x 1524 mm	2 cu. yds. 1.53 m <sup>3</sup>	23' 6" 7035.8 mm	56,050 lbs. 249.32 kN	10 HP 7.5 kW	11,980 lbs 5434 kg

### Options

- Smart Fast™ Drain System
- Hoses & pipe
- Pump
- Additional ball valves
- Hoppers, Doghouses & Chutes
- Receiving containers from 20 to 35 cu.yd. capacity
- Direct 4" side drain line with shut off from processing chamber to ground drain
- Electric dumpers, tippers & carts
- Ozone control systems

**Komar's Auger Pak** meets all ANSI and OSHA standards.

Optional Cart Dumpers from 500 to 2,000 lbs.



Quality Made in the USA



Environmental Business

Call Today!  
BUY • RENT • LEASE

**Komar Industries**

Phone 614.836.2366

FAX 614.836.9870

4425 Marketing Place

Groveport, OH 43125

web: www.komarindustries.com

E-mail: info@komarindustries.com