



THE KOMAR BRIQUETTING SYSTEM

innovative reclamation processing



The KB2736 takes a Big Bite out of your recyclable material by providing briquetting on a continuous basis utilizing a high torque hydraulic drive of the briquetting roll. It is designed to form briquettes with cold, hot, or dry binders.

FEATURES:

- 97% Effective Briquetting Roll Work Surface
- Asymmetrical Briquette Shape for Efficient Material Handling & Shipping
- Up to 150 Tons per Hour
- Various Size Equipment
- Different Pocket Sizes Available
- Modular Equipment Design
- Operator Friendly Control System

RESULTING BENEFITS:

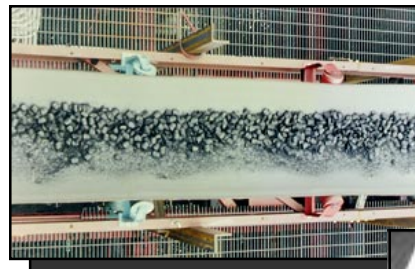
- Low Operational Cost
- Low Maintenance Cost
- Low Briquetting Cost
- Profitability Through the Sale of the Briquettes
- Low Installation Cost

Why Briquette?

The briquetting of fuel was a significant business in the early 20th century. A multitude of plants around the world produced literally tens of millions of tons of usable and economic material that met the energy needs of industry. This process faded mid-century though, as other fuel sources became available. Currently, briquetting is undergoing a renaissance, principally due to the convergence of two critical factors. The recent developments in briquetting process design and binder innovations have dramatically changed the economics of using stoker fuel briquettes as an energy resource, thus making briquetting once again an attractive industry. In addition, there has been a steady increase in worldwide governmental pressure to address the problem of waste disposal, a dilemma that briquetting can help remedy.



The Resource: Millions of tons of coal fines.



The Product: Fuel Briquettes available in various sizes.



KOMAR INDUSTRIES, INC.

4425 Marketing Place
Groveport, Ohio 43125

TEL: (614) 836-2366

FAX: (614) 836-9870

U. S. and Foreign Patents Issued and Pending



Visit Komar on the World Wide Web: komarindustries.com
Or E-mail us at: info@komarindustries.com

Applications:

The beneficial recovery of coal fines:

Abandoned coal fines represent a continuing and unnecessary liability to the mine owner; for the Komar system can cost-effectively recover the energy value of this material. In the United States alone, there are an estimated one billion tons of economically recoverable coal fines, the energy equivalent of approximately 10 years' electricity output from all the nuclear generating systems in the nation.

Refuse derived fuels:

Refuse derived fuels may be the greatest and most advantageous application of Komar technology. According to Federal EPA guidelines, by the year 2005, the amount of MSW dumped at community landfills must be reduced by 50%. Komar's Spiralclave™ Thermal Separation System can help meet these regulations by diverting the organic material in MSW and recovering its inherent and currently wasted energy value. Cost-effective RDF can be developed from waste materials, blended with coal, and bound together with a high-BTU binder. Komar's waste management solution also aids in the recovery and reuse of valuable recyclables.

The Recovery of other heretofore "unusable" materials:

Komar's briquetting system is a practical and economically viable method for the beneficial reuse of various differing waste streams, including sawdust, wood waste, pulverized paper, and paper waste in combination with a beneficial binder.

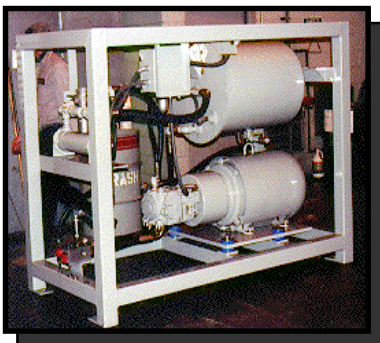


Installation of modular briquetting system

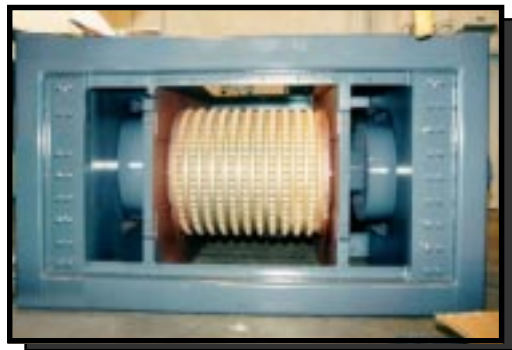
The Briquetter System and its Components

The system is designed and built in its own modular plant infrastructure. The modular structure, which includes the entire briquetting system, is shipped in modules to the job site with the blender and control panels all pre-installed. The system contains one blender/mixer/conditioner, one Komar briquetter, one volumetric meter feeder, and comes equipped with its own computerized control panel. Room is provided in the structure at the head end of the feed conveyor, for the introduction of the base feedstock, and at the tail end of the product conveyor, for extracting the finished product.

Each module has a checker plate floor and the top module has checker plate roof. Also, turnkey installation supervision and training are included. Optional items include module structure doors, siding, foundations, external conveyors, surge bins, weigh scales, and other material handling equipment can also be interconnection, and fire protection.



Hydrostatic Power Unit



Side Access for Easy Roll Removal



Unique Briquetting Rollers for Higher Output

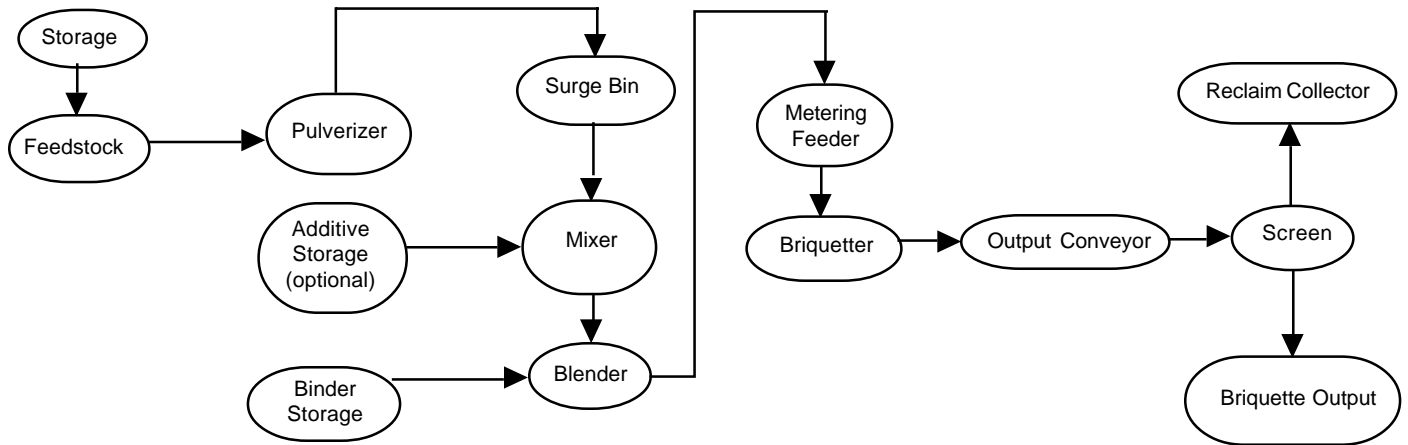
Komar Industries, Inc. custom engineers, manufactures, installs, and services complete processing systems.

Call or write: **KOMAR INDUSTRIES, INC.**
4425 Marketing Place
Groveport, OH 43125



Tel: 614 - 836 - 2366
Fax: 614 - 836 - 9870
International Calling Code for United States is 1

The Briquetting Process System



Two side by side briquetting systems



Motor control center



Binder tank storage

The System Product

The Komar Briquetting System manufactures an alternative, engineered fuel briquette from coal fines and/or from other added waste material, such as wood, organic material, or waste fluff. The resulting product resembles charcoal briquettes, and when binder is added, the BTU value of the fuel briquettes may be enhanced to meet customer specifications. It is advantageous to produce Komar alternative briquettes to assure combustion properties, facilitate handling, and reduce material handling. The clean-burning characteristics of the Komar briquette enables them to be used for stoker fire boilers that generate steam and co-generate electricity. The Komar high performance briquetter is designed to produce briquettes from 30 TPH to 150 TPH, depending on the feedstocks.

Binder

Komar will provide binders for various feedstocks to produce solid fuel briquettes. Once the feedstock (coal fines, wood waste, household waste, etc.) is identified and the fuel user's specifications are determined, Komar can provide an engineered binder to make an acceptable fuel briquette in terms of BTU, sulfur and ash content, and material handling characteristics. Komar can also provide customer support in terms of combustion and/or chemistry evaluation.



WASTEC
Waste Equipment
Technology Association

KOMAR INDUSTRIES, INC.

4425 Marketing Place
Groveport, Ohio 43125

TEL: (614) 836-2366

FAX: (614) 836-9870

U. S. and Foreign Patents Issued and Pending



Visit Komar on the World Wide Web: komarindustries.com
Or E-mail us at: info@komarindustries.com