



THOR HYDRO-AUGER

HEAVY DUTY VOLUME REDUCTION PROCESSOR

innovative waste processing systems

MATERIALS PROCESSED:

- Construction & Demolition Debris
- Railroad Ties with "S" clips and tie plates
- Tree Stumps
- 55-Gallon Drums (empty or full)
- Utility pole cutoffs with spikes
- Cable reels with tie bolts
- Oversized Pallets
- Wood Crates
- Hardwood Pallets
- White Goods

UTILIZATION BY:

- RR Tie Processors
- Construction & Demolition Haulers
- Municipal Solid Waste
- Landfills & Transfer Stations
- Heavy Industrial Applications
- Material Recovery & Scrap Yards
- Energy Recovery Systems (Industrial, Utilities, etc.)
- Incineration Operations

FEATURES:

- Continuous operation with large infeed hopper
- Heavy duty solid forged steel alloy shaft available in 12" or 16" diameter with 2 1/2" cast flighting
- Hydrostatic drives, variable-speed, high-torque, low-horsepower, shock-resistant operation
- Isolated sealed bearings
- Modular designed subcomponents
- High-grade NEMA 4 electrical enclosures
- IEC electrical controls
- Controlled by programmable logic controller

Optional accessories -- see reverse side



Model THA-12 shown with stand and take away conveyors and material screen for optional fines.

The KOMAR Thor Hydro-Auger Processor providing primary shredding of the most difficult to process waste at the lowest on line operating cost of any volume reduction equipment. It operates at low speed with minimum noise, dust and energy requirements in order to handle high volume of difficult materials including tramp materials.



One Screw Processing Chamber



Optional rugged deep section trough screen are designed to provide a positive, fast discharge of fines, while reducing wear and maximizing horsepower.



Hydrostatic Power Unit

KOMAR INDUSTRIES, INC.

4425 Marketing Place
Groveport, Ohio 43125

TEL: (614) 836-2366

FAX: (614) 836-9870

U. S. and Foreign Patents Issued and Pending

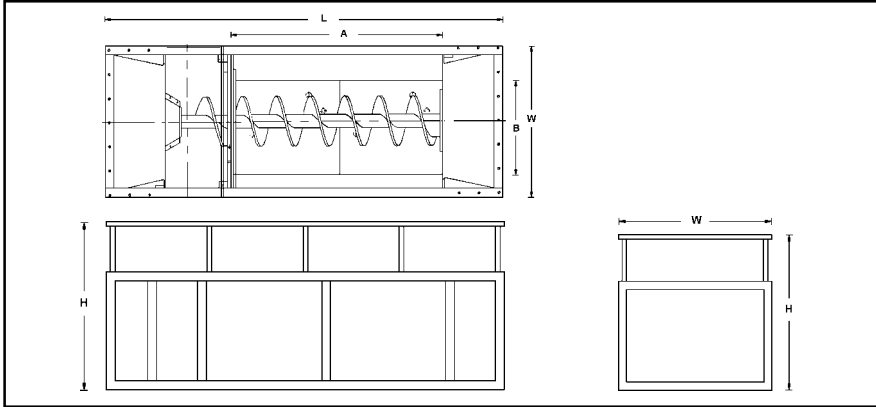


Visit Komar on the World Wide Web: komarindustries.com
Or E-mail us at: info@komarindustries.com

KOMAR

means
QUALITY

full systems engineering services available



Optional Accessories

- Trough Screen
- Custom-Designed Support Stand
- Service Platform w/Ladder
- Dust Suppression System
- Cold Weather Package
- Material Infeed/ Outfeed Equipment
- Standard or Custom-Built Hopper
- Diesel Drive
- Soft Start
- Magnets

TECHNICAL DATA: LOW SPEED HYDRO-AUGER

MODEL	THM-12	THA-12	THA-16
Electric drive (hp)/ diesel hp	1 - 200 / 450	300 / 600	400 / 800
Voltage	460 V/ 3 phase / 60 Hz	460 V/ 3 phase / 60 Hz	460 V/ 3 phase / 60 Hz
Auger Flighting	2 1/2"	2 1/2"	2 1/2"
Charge Opening (A x B)	12' x 8'	12' x 9'6"	12' x 9'6"
Shaft Dia. Solid Steel	12"	12"	16"
Auger Diameter	40"	42"	50"
Auger Speed Range	0 to 21	0 to 31	0 to 28
No. of Hydraulic Motors	1	2	2
Dimensions of Shredder (LWH)	22' x 8' x 9'	24' x 10' x 10'	28' x 10' x 10'
Weight (approx.)	60,000 lbs.	80,000 lbs.	101,000 lbs.
Charge Capacity cu. yds.	6 yd ³	7 yds ³	7 yds ³
HPU dimensions (LWH)	9'6" x 5' x 9' / 11'3" x 7' x 7'	9'6" x 5' x 9'	9'6" x 6'9" x 10'3"
Thrust at 5,000 psi	400,000 lbs.	420,000 lbs.	478,000 lbs.
Max. Torque at 5,000 psi	60,000 ft./lbs.	81,000 ft./lbs.	96,000 ft./lbs.

Throughputs (per hour)**

Pallets	45,000 - 80,000
Wood Dunnage	55,000 - 100,000
Municipal Solid Waste	70,000 - 120,000
C & D Debris	60,000 - 120,000
White Goods	30,000 - 55,000
Utility Pole Cutoffs	60,000 - 100,000
Railroad Ties	60,000 - 120,000
Cable Reels	50,000 - 60,000

**Estimates are a result of representative sample testing. Actual throughput rates may vary, dependent upon methods of feed and materials consistency. Throughputs are for reference only -- contact the factory for throughput ratings on specific materials.

Specifications are subject to change.

Tree Stumps



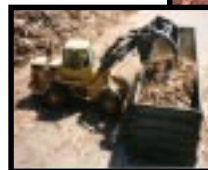
C & D Debris



Pole Cutoffs



Wood Waste



Railroad Ties



Primary Grind



WASTEC

Waste Equipment
Technology Association

Komar Industries, Inc. custom engineers, manufactures, installs, and services complete waste processing systems for virtually all types of solid, semi-solid, hazardous, and non-hazardous materials and waste streams.

Call or write: **KOMAR INDUSTRIES, INC.**
4425 Marketing Place
Groveport, OH 43125

Tel: 614 - 836 - 2366
Fax: 614 - 836 - 9870
International Calling Code for United States is 1

Video Demonstrations
Available