



# Komar Auger-Pak®

Quality Made  
in the USA



Since 1977

**Heavy-Duty Industrial Wood Pre-Crushing Compactor**

**EMD-180W**



EMD-180W with dock enclosure hopper

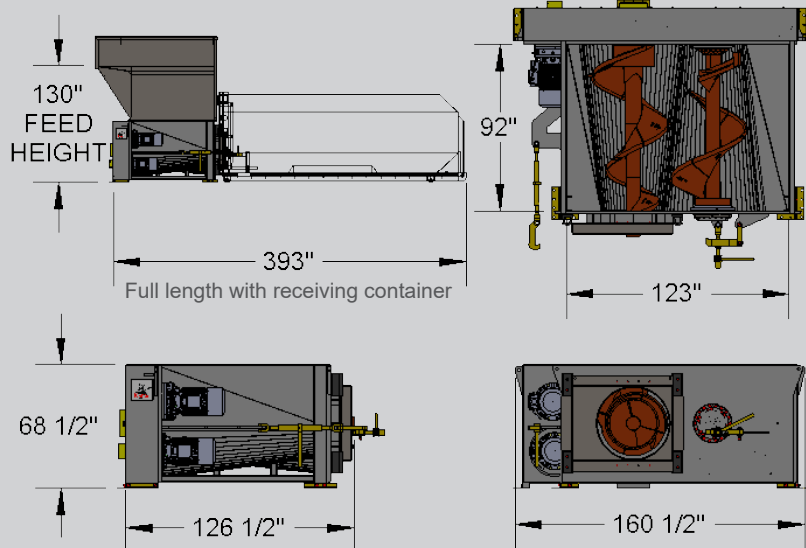
- Quickly rids yard and facility of wood waste
- Shreds and compacts in one machine
- Significant volume reduction increases payload weights & lowers transportation cost
- Machine processing is safer for employees
- Eliminates manual sawing or handling
- Handles nails, bolts, hinges, and corner bracing
- Connects to standard receiving container
- Clean quiet electric drive, no hydraulic leaks

## Komar EMD-180W Dual Auger-Pak®

The Komar EMD-180W Auger-Pak® is a heavy-duty, dual screw all-electric industrial pre-crushing compactor. It is ideal for applications where oversized materials such as large equipment skids, crates, oversized pallets, and cable spools are present in the waste stream. These materials are hard to handle, take up valuable floor space, and generate expensive waste transportation costs. The Auger-Pak® provides a quick means to reduce wood volume and transportation costs, by crushing and compacting directly into a standard 40 cubic yard receiving container. The powerful all-electric cycloidal drive, in combination with our large heavy-duty auger screw, achieves high density loads up to 10 tons\* for recycling or disposal.



\* Load weights vary depending on material and loading method



Dimensions and process data for reference only

### Machine Specifications

Horsepower	180
Footprint (L x W x H)	126" x 160" x 68"
Process Chamber (L x W)	92" x 123"
Full System Weight (lbs.)	44,453
RPM / Torque (ft-lbs.)	20.35 / 30,971

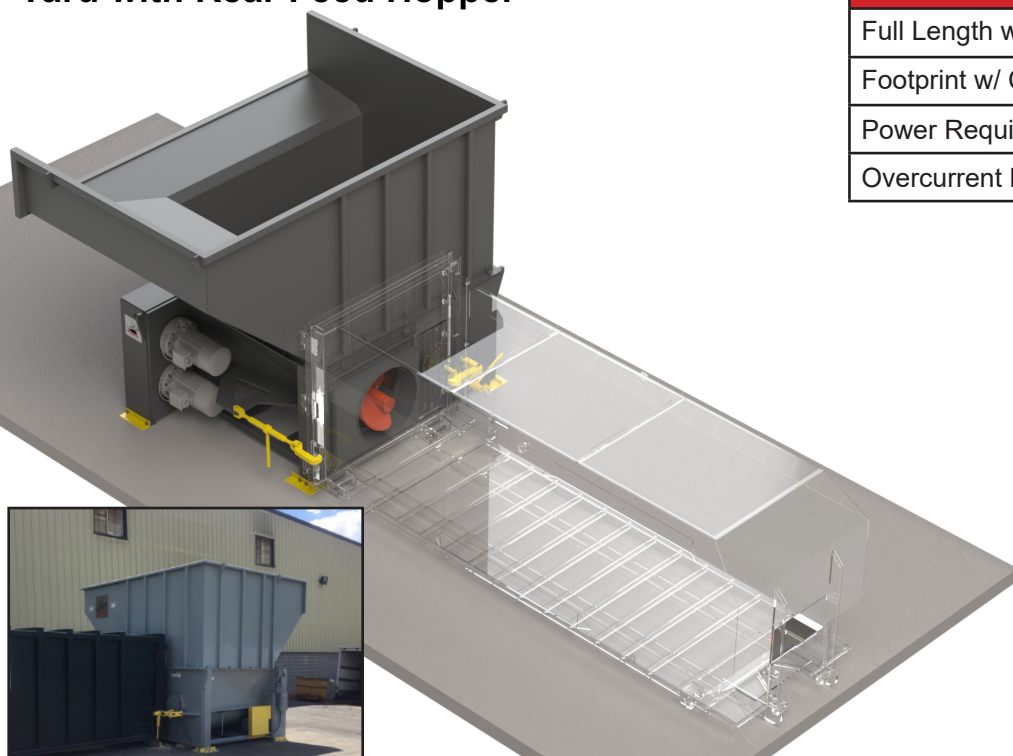
### Processing Specifications

Peak Tons per Hour	10-20
Standard Pallets/Charge	20
Pallet Size* (L x W)	144" x 84"
Crate Size* (L x W x H)	144" x 84" x 84"
Cable Spool Size* (dia.)	96"

\* Occasional pieces up to 180" in length can be processed but will require special handling.

## INSTALLATION TYPES

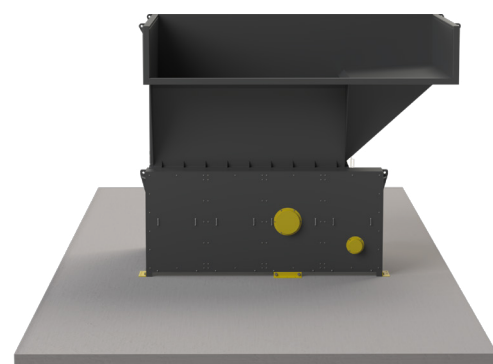
### Yard with Rear Feed Hopper



- Shown with clear standard receiving container to illustrate attachment.

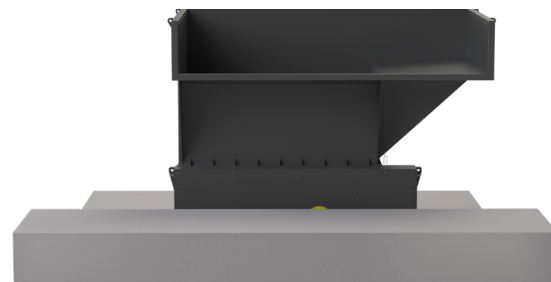
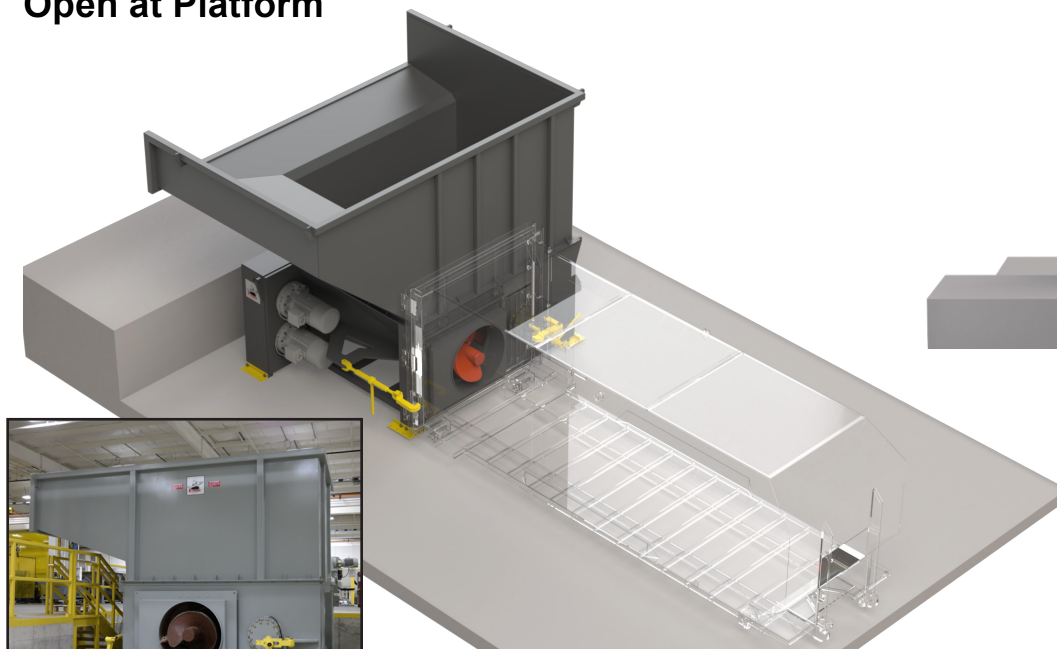
### Installation Specifications

Full Length w/ Container	393"
Footprint w/ Concrete Pad	417" x 162"
Power Requirement	480 V, 3 PH, 60 HZ
Overcurrent Protection	400 amp MCP type breaker



Rear View

## Open at Platform

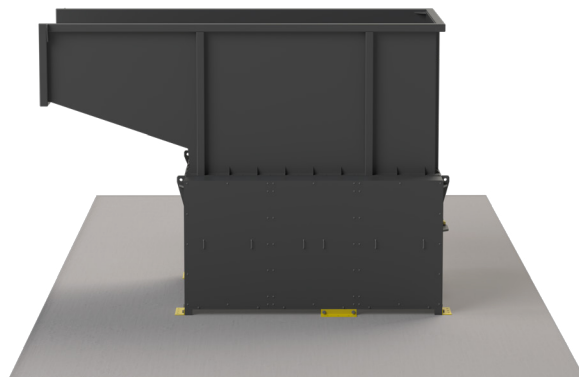
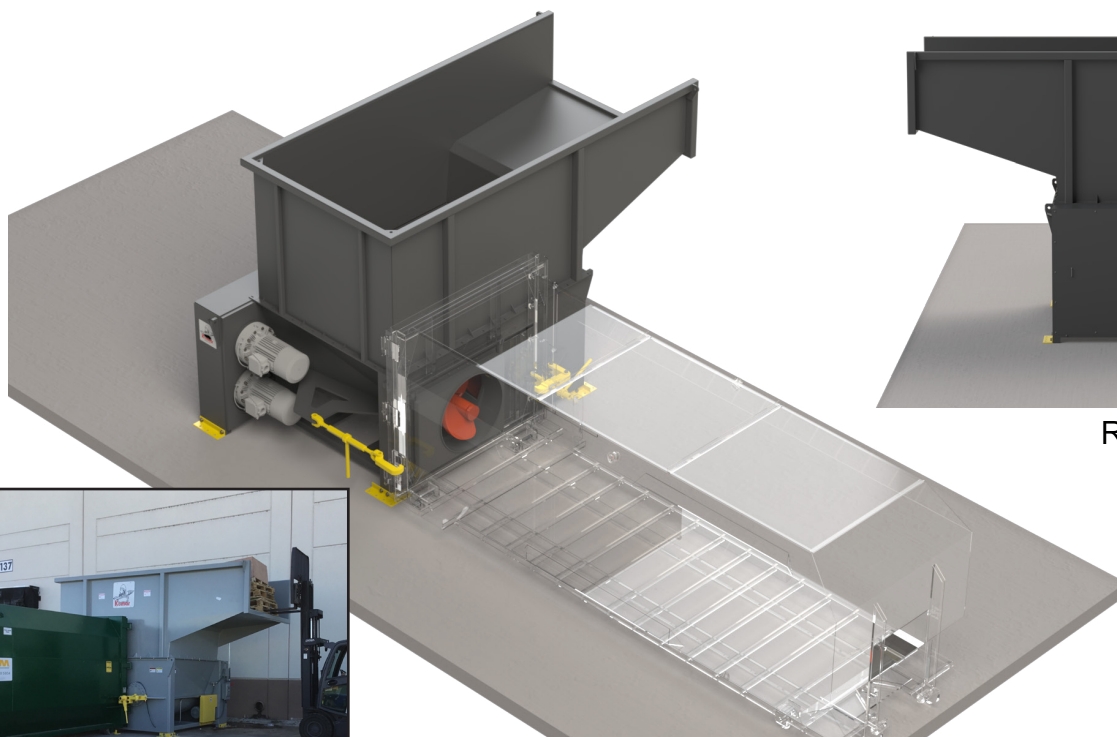


Inside View



- Shown at platform
- Shown with clear standard receiving container to illustrate attachment.

## Yard with Side Feed Hopper

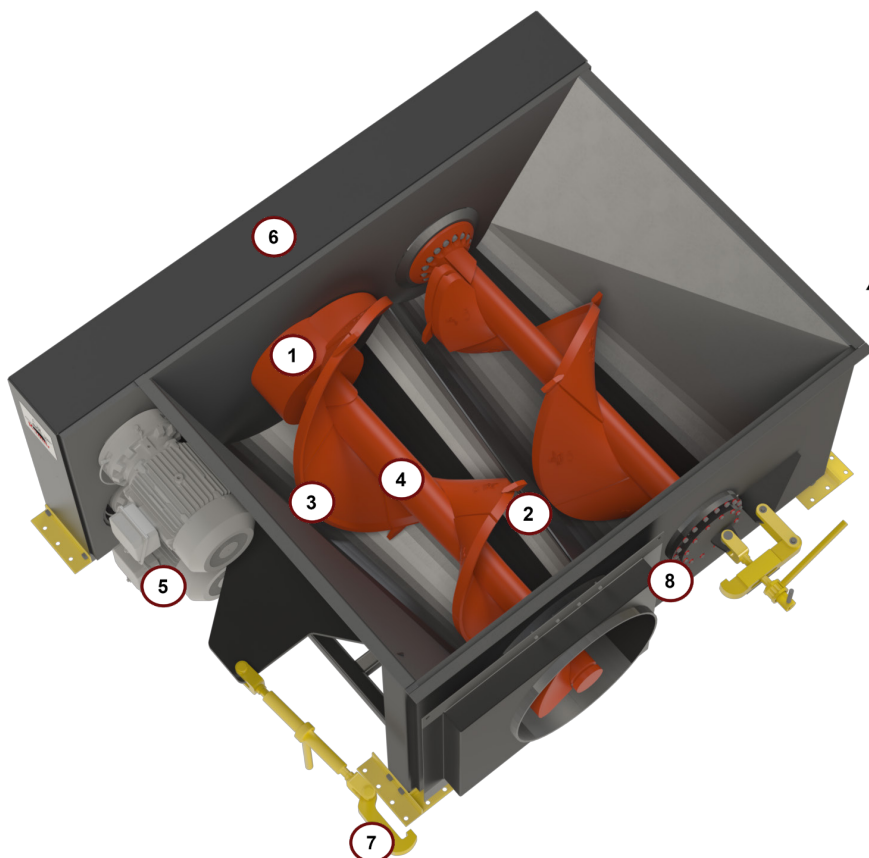


Rear View



- Side feed hoppers are available in both left or right feed
- Shown with clear standard receiving container to illustrate attachment.





# Komar

## Auger-Pak®

### EM-W Technology Overview

#### ① Patented Solid Lube Bearing Support System

Allows for the use of the biggest and most powerful auger screws in the industry, resulting in maximum compaction force.

#### ② Teeth

All of our wood machines include teeth to help with the initial breakdown of dense material.

#### ③ Cast Alloy Steel Flights    ④ Tapered Solid Alloy Steel Shaft

Using the highest quality components to construct our auger screws extends service life. The mass and shape of the cast flights increases overall strength and durability, while providing more efficient material delivery to the receiving container. Our patented tapered shaft uniquely distributes force along the shaft, minimizing stress on the bearings and maximizing screw life.

#### ⑤ Cycloidal Drive with 500% Shock Load

Don't judge a drive strictly by the motor's horsepower, especially when you plan to process heavy industrial materials. A high shock load rating is important in giving the compactor the ability to crush through large loads without damage to the drives.

#### ⑥ Worry-Free Chain and Bearing Lubrication System

The engineered, automatically lubricated chain, coupled with the self-lubricating bearing system with automatic grease purge cuts down on routine maintenance.

#### ⑦ Ratchet Binders    ⑧ Container Adaptor

The auger compacts directly into a standard roll-off receiving container typically provided by your local hauler, and meets ANSI and OSHA specifications.



Groveport, OH



(614) 836-2366



[www.komarindustries.com](http://www.komarindustries.com)



[info@komarindustries.com](mailto:info@komarindustries.com)