

Komar Industries, Inc.

Manufacturing Services



Komar Industries, Inc. is a full service company specializing in complete system design, engineering, manufacturing and service of heavy equipment and systems.

E-mail: info@komarindustries.com
www.komarindustries.com

Komar's manufacturing facility, located in Central Ohio, contains state-of-the-art equipment that allows superior quality to be built into every piece of equipment. Our Computer Numerical Control (CNC) machining centers are the largest in Central Ohio, and allow for increased precision and efficiency in all manufacturing processes.



45,000 sq. ft. engineering & manufacturing facility in Groveport, Ohio.

Innovative product design, creative manufacturing and quality craftsmanship has made Komar Industries a world leader in solving difficult material processing problems.



Komar has developed relationships worldwide serving customers in various industries.

Services Provided

- *System Capabilities*
- *Engineering*
- *Controls*
- *Hydraulics*
- *Service*
- *Machining*
- *Painting*
- *Shot Blasting*
- *Gear Cutting*
- *Fabrication*
- *Assembly*

KOMAR INDUSTRIES, INC.

4425 Marketing Place
Groveport, Ohio 43125

TEL: (614) 836-2366

FAX: (614) 836-9870

U. S. and Foreign Patents Issued and Pending



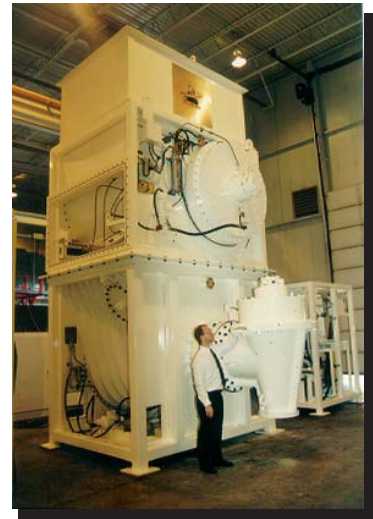
System Capabilities



Komar designs and manufactures complete processing equipment and systems for various types of waste handling and fuels blending applications.



Tri Auger System for hazardous waste processing incorporating airlocked infeed, nitrogen purging, oxygen sampling, fire suppression & explosion venting.



Complete hazardous waste stabilization system incorporating dual auger shredder/blender, 10cu. yd. skip hoist, 10 cu. yd. ram charger & bulk silo additive feed.



Briquetting & fuel blending lines for coal fines & other waste materials



Shred Feed Systems for medical & special wastes



Solid waste shredding & volume reduction

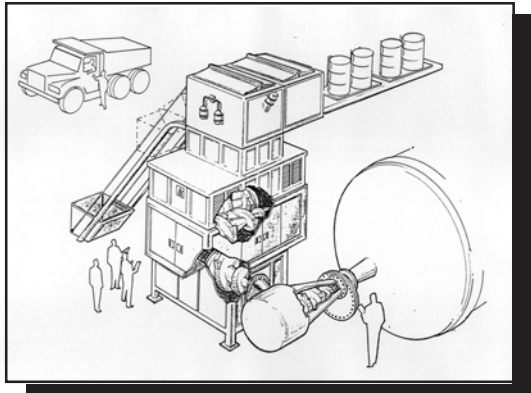




Engineering



Conceptual design through detail manufacturing and assembly drawings for structural, mechanical, hydraulic and electrical systems utilizing the latest in CAD technology.

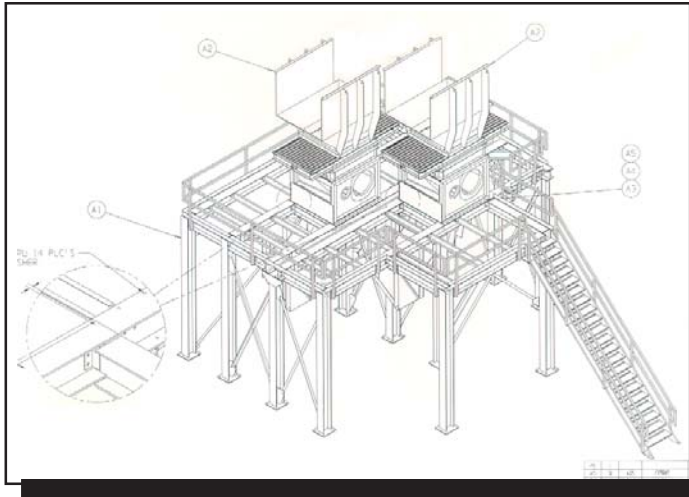


Conceptual

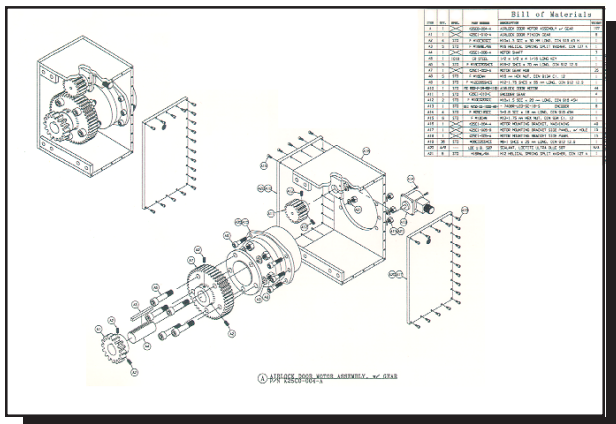
Conceptual design of complete proposed processing system.

General Arrangement

Actual general arrangement of equipment to be manufactured.



Detail



Detail exploded assembly drawings of manufactured components.



Controls



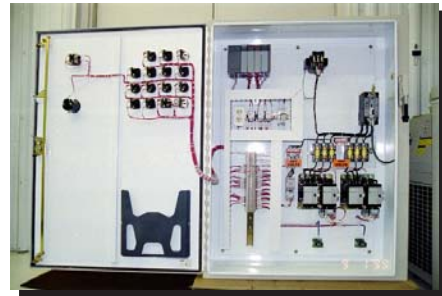
Complete design, manufacturing & integration of machine & system controls utilizing PLC, Graphic Operator Interfaces, Data Highway Communication & Video Monitoring.



Complete Integrated System Control Stations



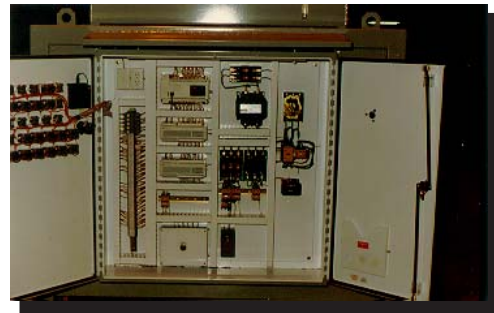
DCS Integrated Controls



MCC & Control Panel Building



Independent machine control systems with pushbutton or touchscreen operator interface.



Machine Mounted Control



Touchscreen Operator Interface



Stand Alone Controls



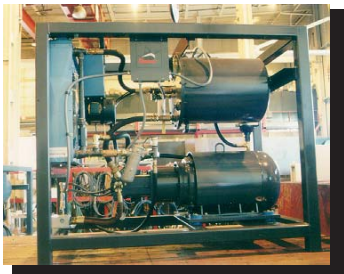
Hydraulics



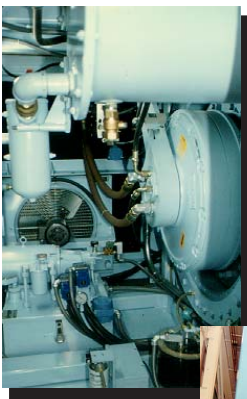
Complete Hydraulic System Design for both open & closed Loop Systems. In house Hydraulic Motor & Pump rebuild capabilities.



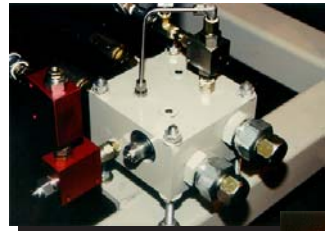
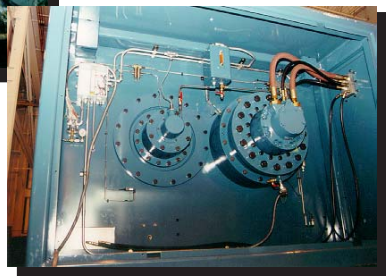
Power Units from 1 to 250 GPM
- 1/2 to 400 H.P. single and tandem stacked
variable displacement closed loop systems



Production runs of Power Units
- 200 H.P. closed loop displacement



Hydrostatic Drive
Assemblies



Custom Manifolds



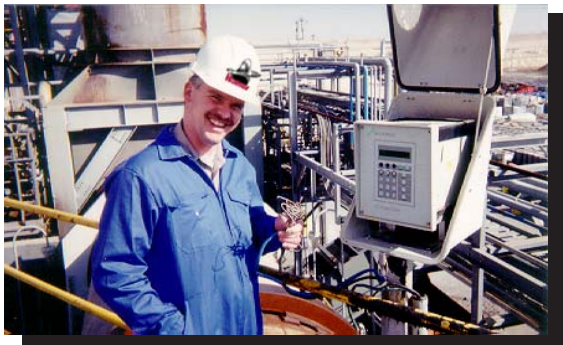


Service



Komar offers customized service and maintenance programs to support our customers worldwide after the sale.

- Start-up assistance is offered for new systems by one or more of our technicians to provide system debugging and operator training.
- Preventative maintenance programs on a monthly or quarterly basis to change fluids, filters and perform visual inspections of the equipment.
- Goldkey maintenance covering all parts and labor for a given period. These programs typically incorporate a fixed list of agreed upon components which Komar will stock and a replacement time for those components.
- Our service crews are available 7 days a week and we have people skilled in rigging, mechanical assembly, electrical, programming and hydraulics.



Start-up technician assisting customer with on-site interconnect & trouble shooting in Beer Sheeva, Israel.



Service technicians assisting with mechanical change-out of major drive assembly in Grafton, Ohio.



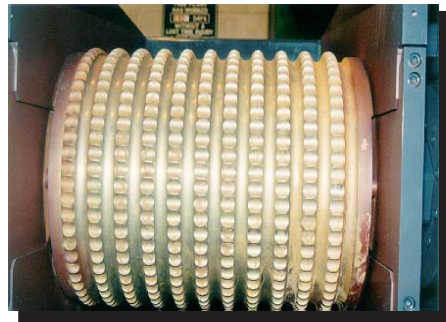
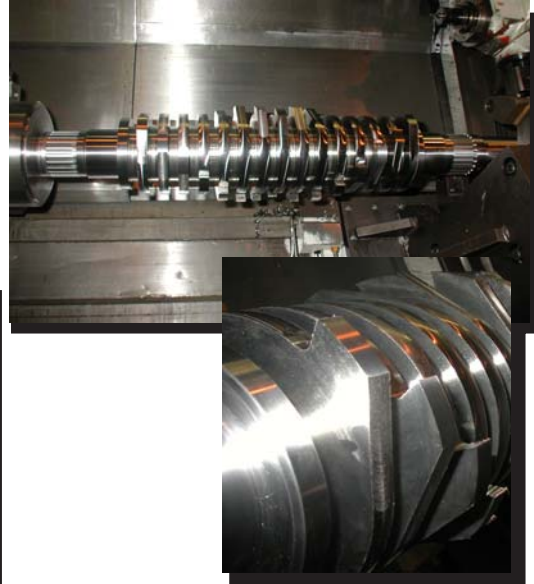
Machining



Multi-axis machining capabilities of large & small parts for prototype or production runs.

Large Complex Mill Turn Parts

Mazak Integrex 70Y Mill Turn Center
- 30" diameter x 120" capacity



Large CNC Turning

Warner & Swasy VTL with 60" Table. Dual Turret.





Machining



Large Turning

- VTL 78" table
- VTL 54" table

Large Milling & Boring

- 30 ton part capacity



Chucking

- W&S SC 28
- W&S SC 2L
- 28" capacity

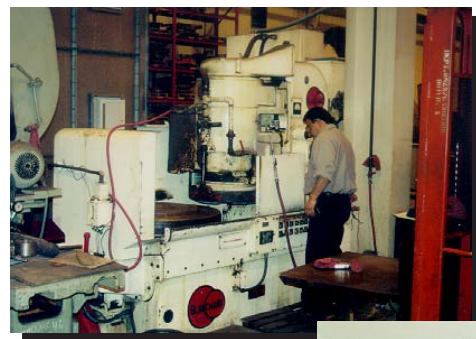


Grinding

Small Part Milling



- Multiple 3 & 4 axis CNC vertical milling centers



- 36" Blanchard
- 42" ID/OD





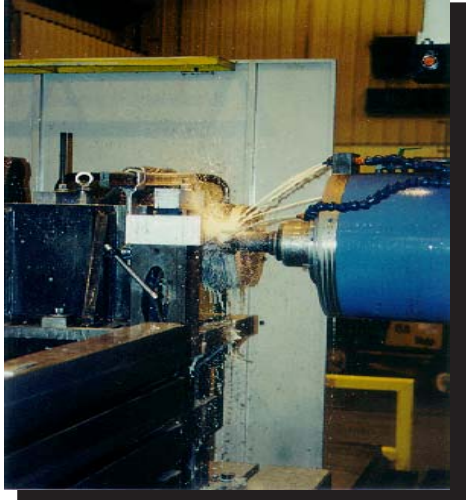
Machining



Large Complex Milling & Boring

Ikegai 5 Axis Horizontal Boring Mill

- Travel 98" Y x 138" X



Medium to Small Complex Milling & Boring

Ikegai 5 Axis Horizontal Boring Mill

- Travel 40" Y x 60" X





Painting



*Inside Dimensions 22'D X 17'W
Door Opening 12'W X 10'H*



SHOT BLAST



*Inside Dimensions 22'D X 17'W
Door Opening 12'W X 10'H*





Gear Cutting



Gear Hobbing with Crowning, Internal Shaping, Spline Cutting & Keyseating.

Pfauter P630 Universal Gear Hob

- 2.5 D.P.
- Crowning
- 24" Diameter



Spur

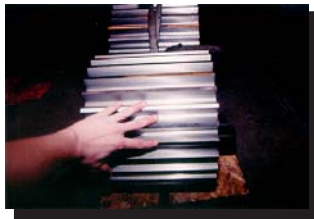
&

Helical



Pfauter P900 Universal Gear Hob

- 2.5 D.P.
- Crowning
- 36" Diameter



Fellows Vertical Gear Shaper

- Model 36-8 with 12" Riser
- 8" Stroke
- 36" Diameter



Mitts & Merrill No. 3A Keyseater

- Keyways from 1/16" to 2"
- Maximum Stroke 15"
- Rotary Index Table



*Internal &
External Gears*



Fabrication



Full service fabrication of carbon and alloy steels utilizing Spray Arc, MIG, Sub Arc & TIG welding processes.

Modular Ash Drag Conveyor with Explosion Panels

- 10" x 10" Structural Tube Frame
- 8" x 8" angle
- Heavy plate steel



Machine Base

- Fabrication of Structural Tube
- 3" Plate & 3/4" Formed Plate

Special Alloys

- Stainless steel
- Inconel
- Hastalloy
- Aluminum



Heavy Augers

- 16" solid forged shaft
- 3" cast flighting
- Hardfacing



Structural Steel

- Handrails
- Grating
- Stairs



Assembly



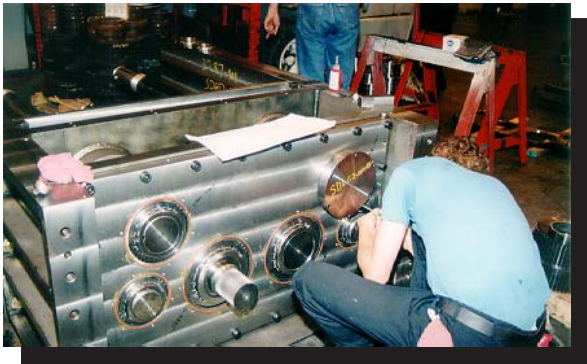
Komar has many years of experience assembling large precision components from bearings & gearboxes to complete machines.



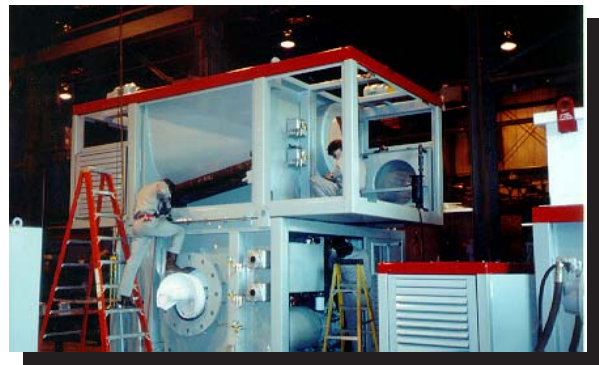
60" diameter bearing assembly completely assembled and tested.



Four shaft shredder head assembly with stack up of close tolerance intermeshing cutters.



Shredder gear box assembly incorporating bearings, gears and mechanical seals.



Machine modules for hazardous waste processing system.



Assembly

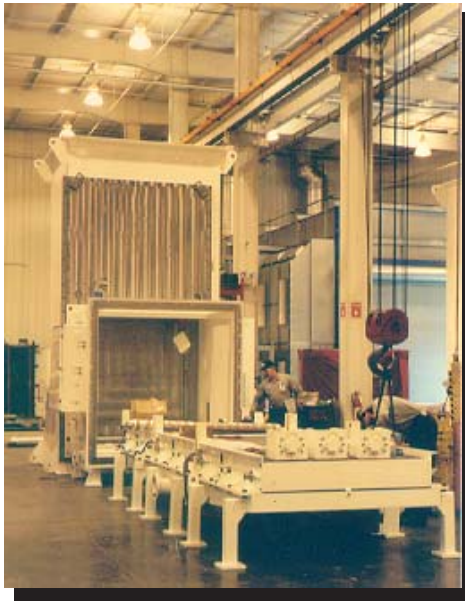


Complete airlock assembly with nitrogen purge and oxygen sampling system.

Field Installation



Dual auger shredder with horizontal steel belt conveyor assembly.



Airlock, material lift chamber and hydraulically powered slat conveyor assembly.

In House Assembly & Testing



Complete assembly of incineration feed system for a pharmaceutical waste processing plant.



4425 Marketing Place
Groveport, Ohio 43125
Phone: 614-836-2366
Fax: 614-836-9870

E-mail: info@komarindustries.com
www.komarindustries.com